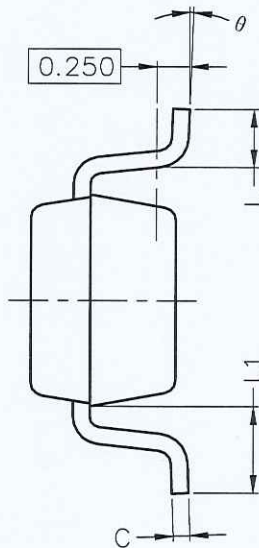
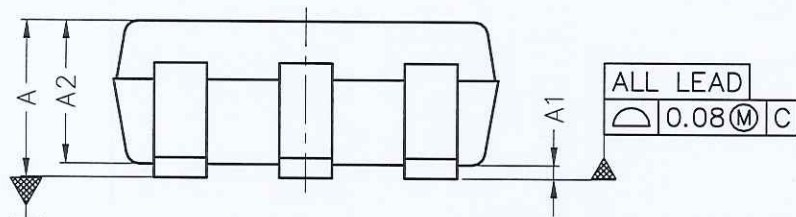


TOP VIEW

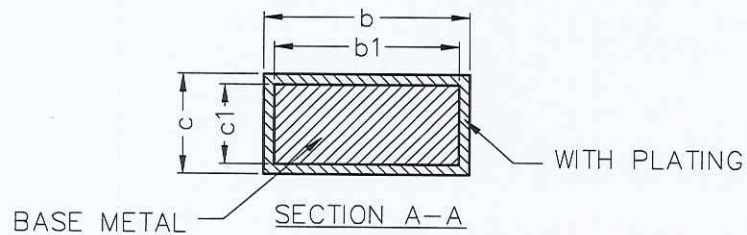



SIDE VIEW

SYMBOL	MIN	NOM	MAX
A	—	—	1.25
A1	0.03	0.08	0.15
A2	1.05	1.10	1.15
b	0.35	—	0.45
b1	0.35	0.40	0.43
c	0.120	—	0.18
c1	0.102	0.127	0.152
D	2.82	2.92	3.02
E	2.60	2.90	3.00
E1	1.50	1.62	1.70
e	0.95 BSC		
L	0.35	0.45	0.55
L1	0.49	0.64	0.79
θ	0°	—	8°



FRONT VIEW



D	全面修改升级版	黄乙为	2022/08/25
C	全面修改升级版	梅俊杰	2020/05/26
B	塑封体宽度：上限由1.72改为1.70，下限由1.52改为1.50	周维	2014/01/01
A	INITIAL ISSUE	石艳	2011/10/16
REV	DESCRIPTION OF CHANGE	DRAWER	ISSUE DATE
TITLE	SOT23-6(8R) POD		
DWG No.	C-0L-019	MATERIAL	
 气派科技 chippacking			
X	±0.5	REV	D
X.X	±0.1	SHEET	1/1
X.XX	±0.05	DWN	黄乙为
X.XXX	±0.050	SCALE	NTS
		UNIT	MM
		APPD	曹周
			2022/08/25